

► **Tipo**
VITON

EPDM

Senza cappuccio

- Minipresa con guarnizioni in VITON aggiungere: **.V**
- Minipresa con guarnizioni in EPDM aggiungere: **.EA**
- Minipresa senza cappuccio sostituire l'ultima cifra con **2**

► **Esempio**
620.01.204.21.**V**

620.01.204.21.**EA**

620.01.204.22

► **Type**
VITON

EPDM

Without cap

- For test point with VITON sealings add: **.V**
- For test point with EPDM sealings add: **.EA**
- For test point without cap replace the last number with **2**

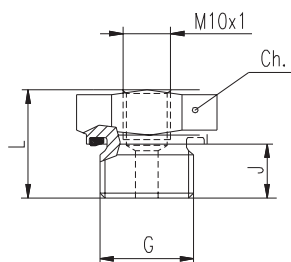
► **Example**
620.01.204.21.**V**

620.01.204.21.**EA**

620.01.204.22

Accessori
Accessories

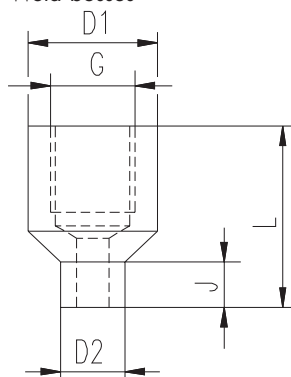
Riduzioni
Reducers



Filettatura **Tipi di tenuta** **p max.** **Quote**

Thread	Sealing type	p max.	Dimensions			Part. No.
			Ch. mm	L mm	J mm	
ISO228-G 1/4"	FORM E	630 bar	19	25	12	630.01.204.20
ISO228-G 3/8"	FORM E	630 bar	22	25,5	15	630.01.206.20
ISO228-G 1/2"	FORM E	400 bar	27	25	14	630.01.208.20
ISO228-G 3/4"	FORM E	400 bar	32	27	16	630.01.212.20
ISO228-G 1"	FORM E	400 bar	41	29	18	630.01.216.20

Tronchetto a saldare
Weld bosses



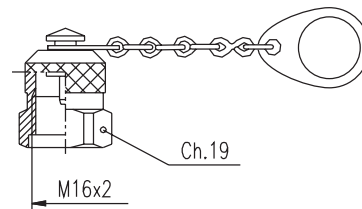
Filettatura **Quote**

Thread	Dimensions				Part. No.
	D1 mm	D2 mm	L mm	J mm	
ISO228-G 1/4"	20	10	28	7	630.02.204.00
M 8 x 1	22	10	26	8	630.02.008.00

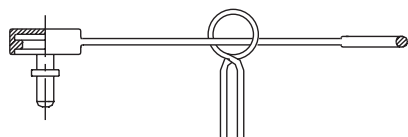
Cappuccio in plastica
Plastic dust cap
Part. No. 630.03.620.00



Cappuccio in acciaio
Steel dust cap
Part. No. 630.03.162.03



Cappuccio parapolvere
Dust cap



Codice
Code
630.03.400.00