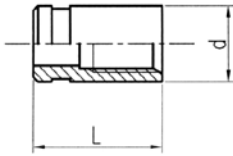


Raccorderia per tubi flessibili MCS

Fittings for MCS micro-hose

Ghiera Ferrule



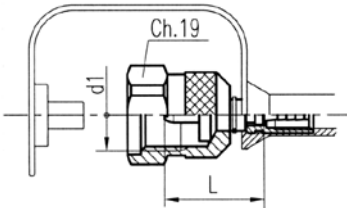
tubo tipo hose type

6400			6500 - 6700		
Part. No.	L	d	Part. No.	L	d
800.00.002.00	14	8	800.00.004.00	17	11,5
810.00.002.00*	14	8	/	/	/

* = inox

* = stainless steel

Raccordo avvitabile Nut connection



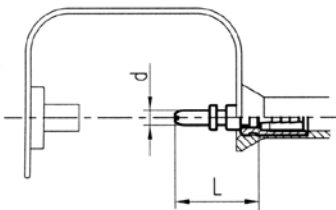
tubo tipo hose type

6400			6500 - 6700				
Part. No.	L	d1	p max.	Part. No.	L	d1	p max.
801.10.161.00	22	M16x1,5	630 bar	/	/	/	/
801.10.162.00	22	M16x2	630 bar	804.10.162.00	22	M16x2	500 bar
810.10.162.00*	22	M16x2	630 bar	/	/	/	/

801.15.162.00 Raccordo avvitabile a 90° 90° nut connection

* = inox / = stainless steel

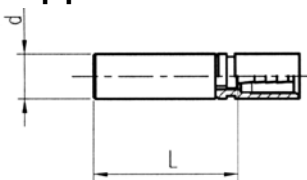
Innesto a baionetta Plug-in connection



tubo tipo hose type

6400			
Part. No.	L	d	p max.
801.20.000.00	19	3,3	400 bar

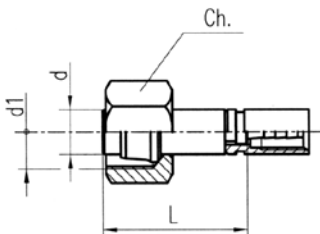
Raccordo a codolo DIN 2353 / ISO 8434-1 Standpipe



tubo tipo hose type

6400			6500 - 6700		
Part. No.	L	d	Part. No.	L	d
801.30.004.00	26	4	804.30.004.00	29	4
801.30.006.00	25	6	804.30.006.00	29	6
801.30.008.00	25	8	804.30.008.00	29	8

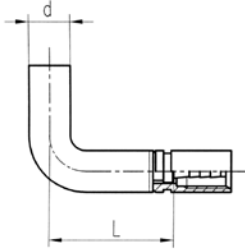
Raccordo a codolo con dado Standpipe with nut



tubo tipo hose type

6400			6400 - 6500			6500 - 6700			
Part. No.	L	d	p max.	Ch.	d1	Part. no	L	d	p max.
801.31.006.00	26	6	315 bar	14	M12x1,5	804.31.006.00	29	6	315 bar
801.32.006.00	26	6	630 bar	17	M14x1,5	804.32.006.00	29	6	500 bar
801.31.008.00	26	8	315 bar	17	M14x1,5	804.31.008.00	29	8	315 bar
801.32.008.00	26	8	630 bar	19	M16x1,5	804.32.008.00	29	8	500 bar

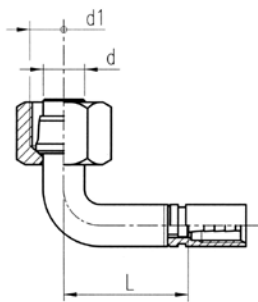
Raccordo a codolo a 90°
90° elbow standpipe



tubo tipo **hose type**

6400			6500 - 6700		
Part. No.	L	d	Part. No.	L	d
801.35.004.00	23	4	804.35.004.00	29	4
801.35.006.00	22	6	804.35.006.00	31	6
801.35.008.00	31	8	804.35.008.00	31	8

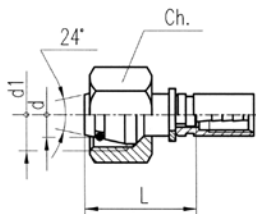
Raccordo a codolo 90° con dado Secondo DIN 2353
90° elbow standpipe with nut According to DIN 2353



tubo tipo **hose type** **6400 -**

6400			6500 - 6700		6500 - 6700	
Part. No.	L	d	p max.	Ch. d1	Part. no	p max.
801.36.006.00	28	6	315 bar	14 M12x1,5	804.36.006.00	315 bar
801.37.006.00	28	6	630 bar	17 M14x1,5	804.37.006.00	500 bar
801.36.008.00	30	8	315 bar	17 M14x1,5	804.36.008.00	315 bar
801.37.008.00	30	8	630 bar	19 M16x1,5	804.37.008.00	500 bar

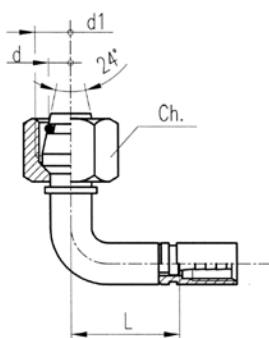
Raccordo femmina metrica - cono 24° con O'Ring - ISO 12151-2
O'Ring metric female 24° cone - ISO 12151-2



tubo tipo **hose type** **6400 -**

6400			6500 - 6700		6500 - 6700	
Part. No.	L	d	p max.	Ch. d1	Part. no	p max.
801.40.006.01	17	6	100 bar	12 M10x1		
801.40.006.00	21	6	315 bar	14 M12x1,5	804.40.006.00	315 bar
801.41.006.00	21	6	630 bar	17 M14x1,5	804.41.006.00	500 bar
801.40.008.00	21	8	315 bar	17 M14x1,5	804.40.008.00	315 bar
801.41.008.00	21	8	630 bar	19 M16x1,5	804.41.008.00	500 bar
801.40.010.00	21	10	315 bar	19 M16x1,5	804.40.010.00	315 bar
801.41.010.00	21	10	630 bar	22 M18x1,5	804.41.010.00	500 bar

Raccordo femmina metrica 90° - cono 24° con O'Ring - ISO 12151-2
90° O'Ring metric elbow 24° cone - ISO 12151-2



tubo tipo **hose type** **6400 -**

6400			6500 - 6700		6500 - 6700	
Part. No.	L	d	p max.	Ch. d1	Part. no	p max.
801.42.006.00	32	6	315 bar	14 M12x1,5	804.42.006.00	315 bar
801.43.006.00	32	6	630 bar	17 M14x1,5	804.43.006.00	500 bar
801.42.008.00	30	8	315 bar	17 M14x1,5	804.42.008.00	315 bar
801.43.008.00	30	8	630 bar	19 M16x1,5	804.43.008.00	500 bar
801.42.010.00	30	10	315 bar	19 M16x1,5	804.42.010.00	315 bar
801.43.010.00	30	10	630 bar	22 M18x1,5	804.43.010.00	500 bar

Raccorderia per tubi flessibili MCS

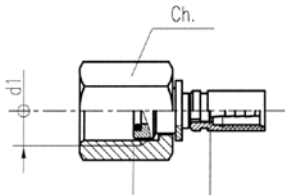
Fittings for MCS micro-hose

Raccordo manometro

EN 837-1

Pressure gauge fitting

EN 837-1

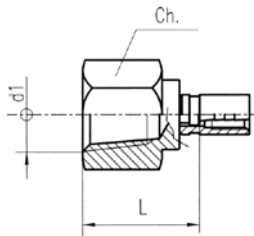


Raccordo manometro

ANSI/ASME B 1.20.1 - ISO 7-1

Pressure gauge fitting

ANSI/ASME B 1.20.1 - ISO 7-1

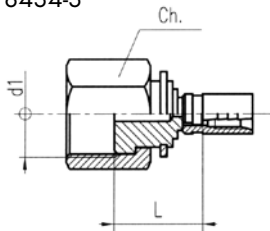


Raccordo femmina girevole "ORFS"

ISO 8434-3

Female swivel "ORFS"

ISO 8434-3

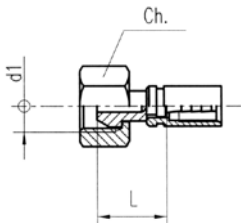


Raccordo femmina girevole 60°

BS 5200 / DIN 3863

60° female swivel

BS 5200 / DIN 3863

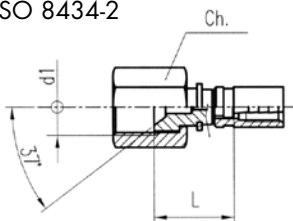


Raccordo femmina girevole

JIC 37° ISO 8434-2

JIC 37° female swivel

ISO 8434-2



tubo tipo

hose type

6400

6500-6700

Part. No.	L	d1	Ch.	p max.	Part. No.	L	d1	Ch.	p max.
801.50.204.00	15	ISO 228 G1/4"	17	630 bar	804.50.204.00	15	/	/	500 bar
801.50.208.00	17	ISO 228 G1/2"	27	630 bar					
*801.50.112.00	17	M20 x 1,5	24	630 bar					

801.54.204.00 Raccordo portamanometro a 90°

90° Pressure gauge

*Non secondo EN 837-1 Out of standard EN 837-1

tubo tipo

hose type

6400

Part. No.	L	d1	Ch.	p max.
801.50.304.00	23	1/4"-18 NPTF	19	630 bar
801.52.204.00	23	ISO 7/1 R 1/4"	19	630 bar

tubo tipo

hose type

6400

Part. No.	L	d1	Ch.	p max.
801.53.506.00	18	11/16-16 UN	22	400 bar

tubo tipo

hose type

6400

6500-6700

Part. No.	L	d1	Ch.	p max.	Part. No.	L	d1	Ch.	p max.
801.60.202.00	14	ISO 228 G1/8"	14	400 bar					
801.60.204.00	18	ISO 228 G1/4"	17	630 bar	804.60.204.00	18	/	/	500 bar
801.60.141.00	18	M14 x 1,5	19	630 bar					

801.65.204.00 Raccordo femmina girevole a 90° G1/4"

90° Elbow female swivel G1/4"

tubo tipo

hose type

6400

6500-6700

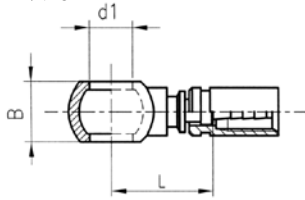
Part. No.	L	d1	Ch.	p max.	Part. No.	L	d1	Ch.	p max.
801.60.404.00	15	7/16"-20 UNF	14	450 bar	804.60.404.00	15	/	/	450 bar
801.60.405.00	17	1/2"-20 UNF	16	420 bar					

Raccordo ad occhio diritto

DIN 7642

Straight banjo

DIN 7642

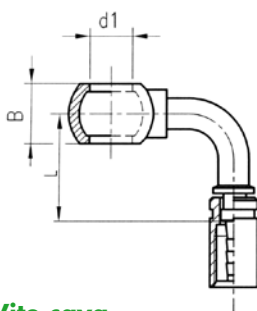


Raccordo ad occhio a 90°

DIN 7642

90° banjo

DIN 7642

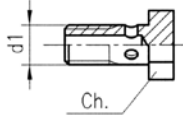


Vite cava

DIN 7643

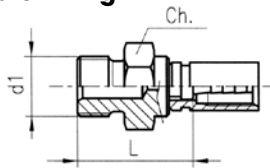
Screw for banjo

DIN 7643



Raccordo maschio fisso

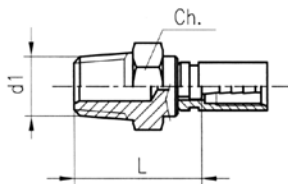
Male fitting



Raccordo maschio fisso conico

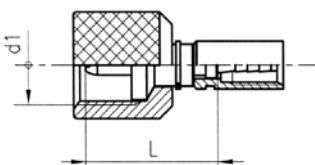
Taper male fitting

Taper male fitting



Raccordo avvitabile

Nut connection



tubo tipo hose type

6400					6500 - 6700				
Part. No.	L	d1	B	p max.	Part. no	L	d1	p max.	
801.70.008.00	19	8	8	200 bar	804.70.008.00	19	8	200 bar	
801.70.010.00	21	10	10	200 bar	804.70.010.00	21	10	200 bar	
801.70.202.00	21	1/8"	10	200 bar	804.70.202.00	21	1/8"	200 bar	

tubo tipo hose type

6400					6500 - 6700				
Part. No.	L	d1	B	p max.	Part. no	L	d1	p max.	
801.72.008.00	25	8	8	200 bar	804.72.008.00	19	8	200 bar	
801.72.010.00	22	10	10	200 bar	804.72.010.00	22	10	200 bar	
801.72.202.00	22	1/8"	10	200 bar	804.72.202.00	22	1/8"	200 bar	

Part. No.	d1	Ch.
A38-08M	M8 x 1	12
A38-10M	M10 x 1	14
A39-A02	ISO 228 G1/8"	14

tubo tipo hose type

6400				
Part. No.	L	d1	Ch.	p max.
801.80.202.00	19	ISO 228 G1/8"	13	400 bar
801.80.204.00	24,5	ISO 228 G1/4"	19	400 bar

tubo tipo hose type

6400					6500-6700				
Part. No.	L	d1	Ch.	p max.	Part. No.	L	d1	Ch.	p max.
801.80.302.00	21	1/8"-27 NPTF	13	400 bar	804.80.302.00	21	/	/	400 bar
801.80.304.00	26	1/4"-18 NPTF	17	630 bar					

tubo tipo hose type

6400			
Part. No.	L	d1	p max.
801.10.125.00	22	S12.65x1,5	630 bar